

Key (including relevant application No.'s);

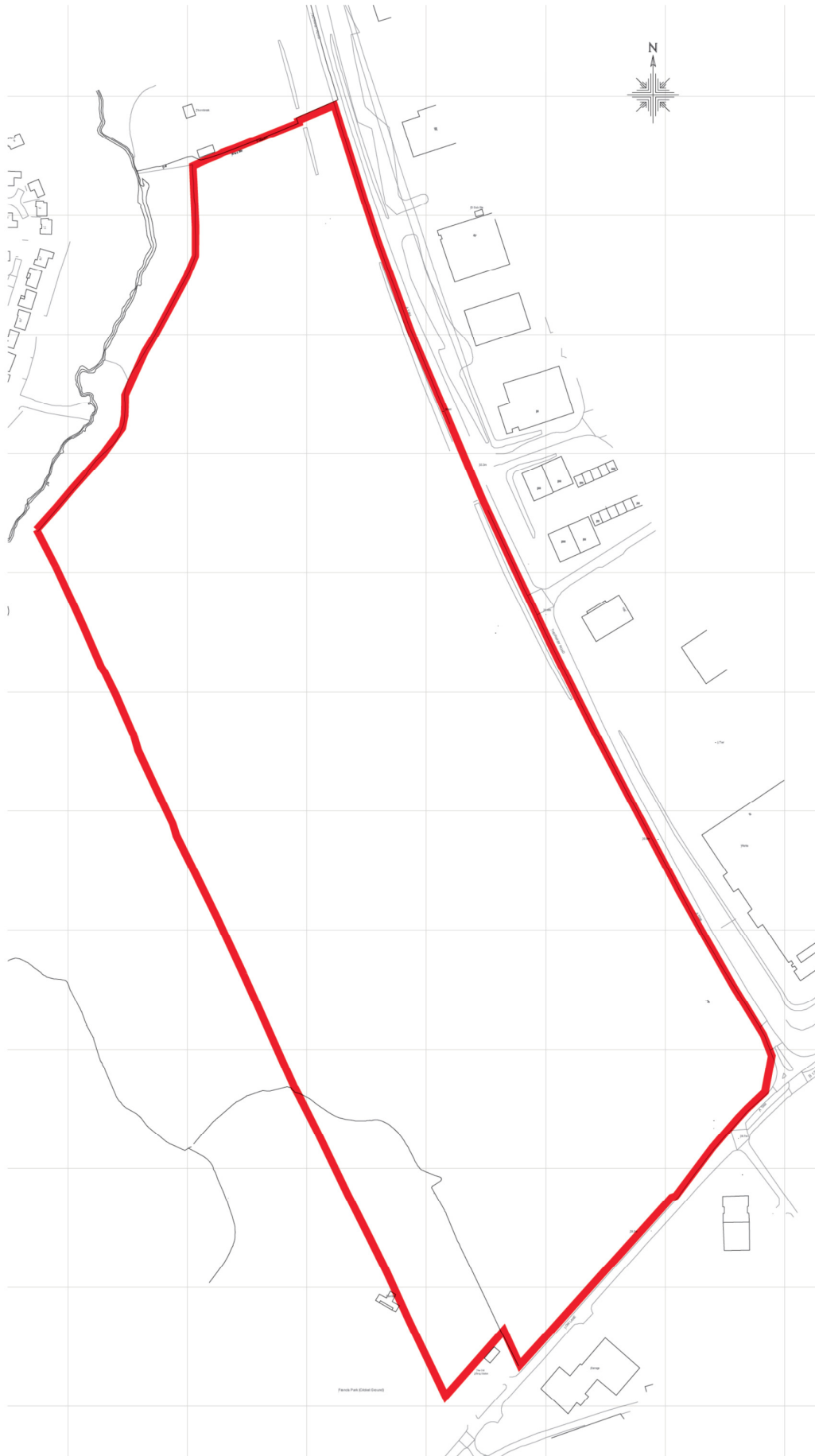
A – Free school and 350 housing site (12/2517/OUT; 13/3077/VARY; 14/3012/REM & 14/3281/REM)

B – 550 homes and local centre (13/3107/OUT; 14/0569/REV & 15/0497/OUT)

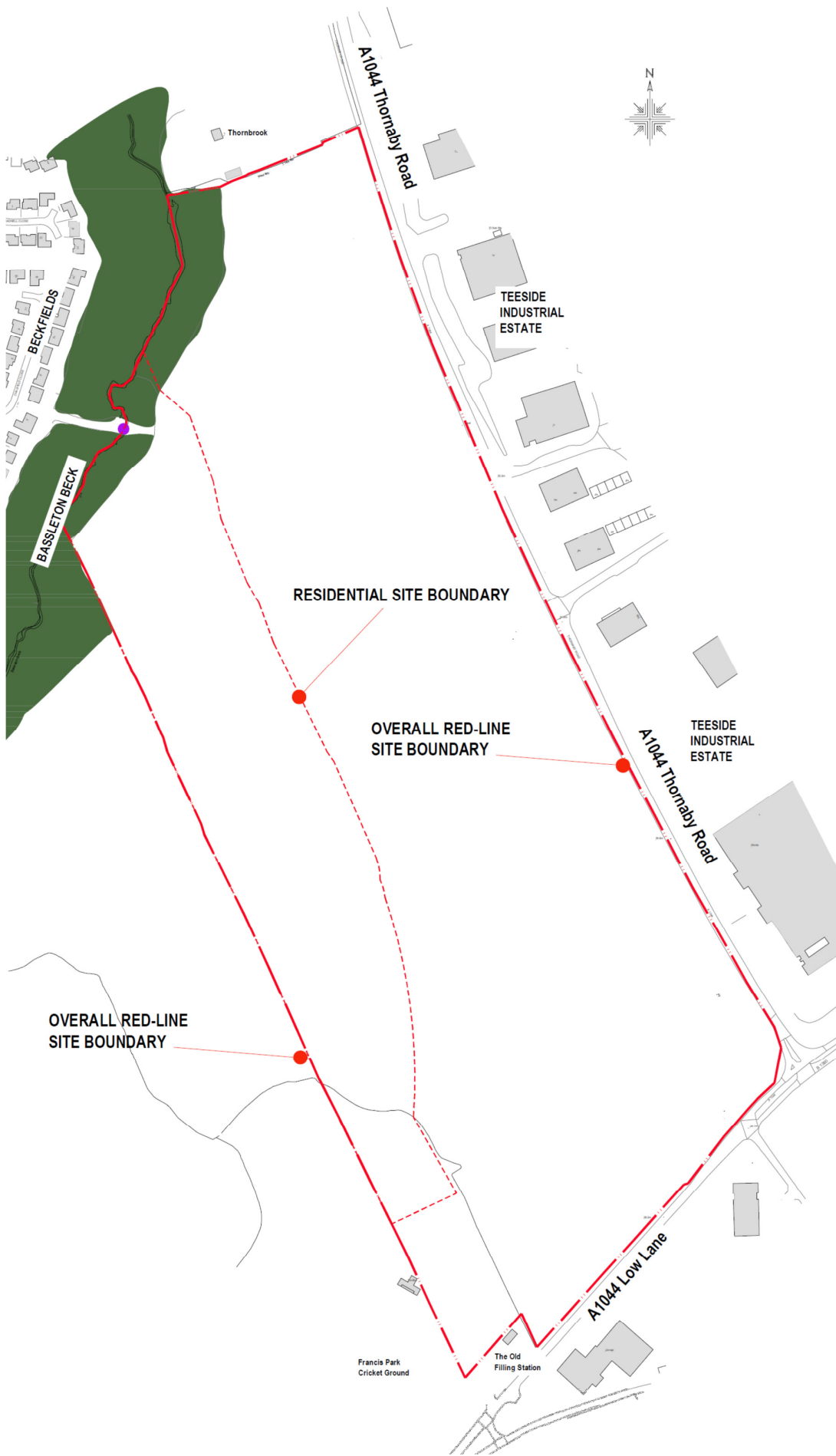
C – Additional 70 homes (14/0562/OUT)

D – Wider application site (14/0208/OUT & 15/0931/OUT)

N.B. dark blue area is extent of housing area proposed

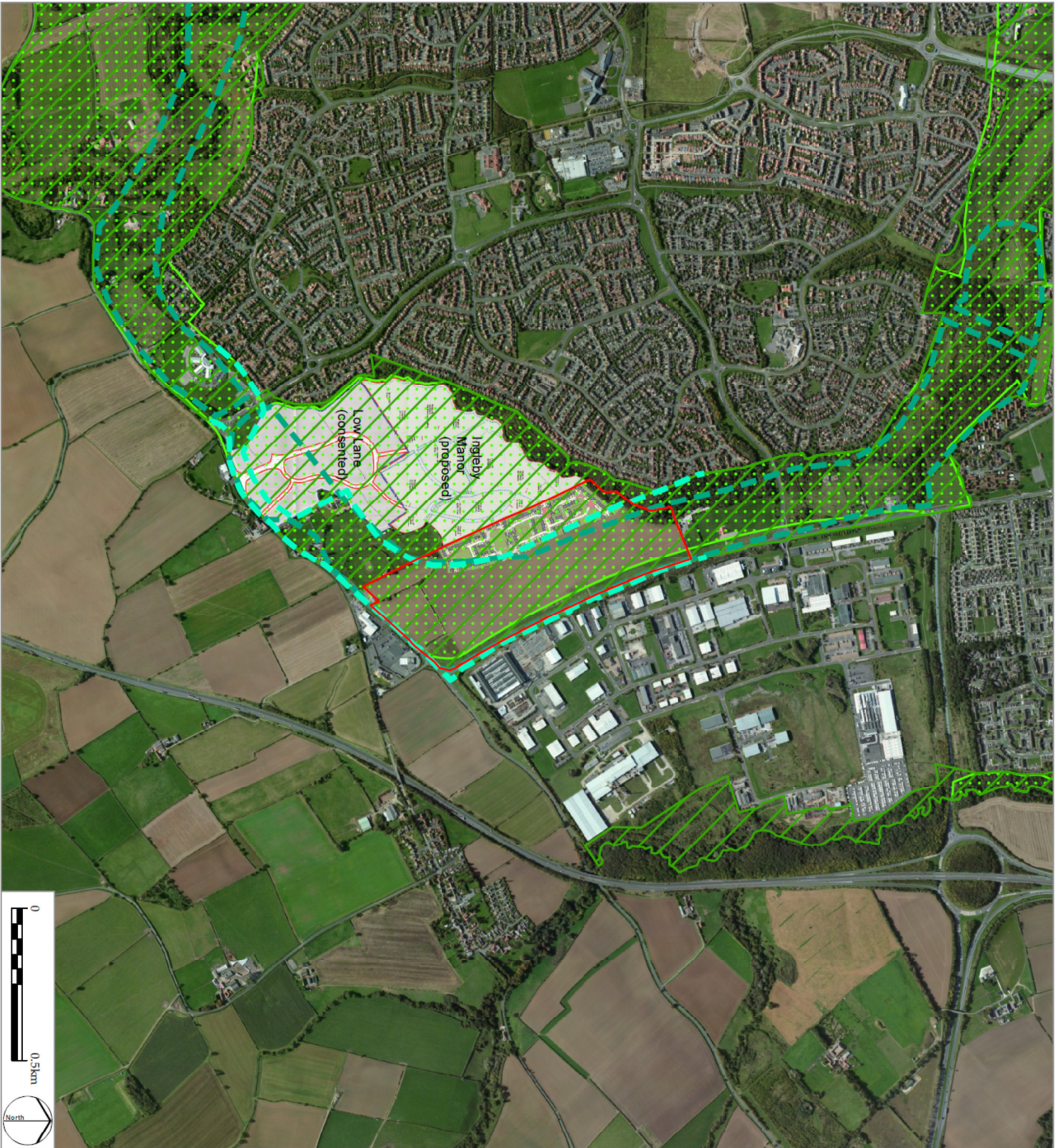


15/0931/OUT - Appendix 2: Site Location plan









- LEGEND**
- Site Boundary
  - Historic extent of Green Wedge (1997 Local Plan)
  - Interim extent of Green Wedge (2012 Issues and Options)
  - Illustrative extent of Green Wedge (Core Strategy)
  - Proposed Green Wedge Boundary (Head of Planning Memo)

# LD&A DESIGN

**PROJECT TITLE**  
 LAND OFF LOW LANE AND THORNABY ROAD,  
 INGLEY BARWICK

**DRAWING TITLE**  
 Green Wedge Boundaries

**ISSUED BY** Peterborough T. 01733 310 471  
**DATE** 13 Apr 2015 DRAWN RK  
**SCALE@A3** 1:12,500 CHECKED RK  
**STATUS** Final APPROVED CG  
**DWG. NO.** 4565\_06

No dimensions are to be scaled from this drawing.  
 All dimensions are to be checked on site.  
 Area measurements for indicative purposes only.  
 © LDA Design Consulting LLP. Quality Assured to BS EN ISO 9001 : 2008  
 Sources: Ordnance Survey; Stockton-on-Tees Borough Council.